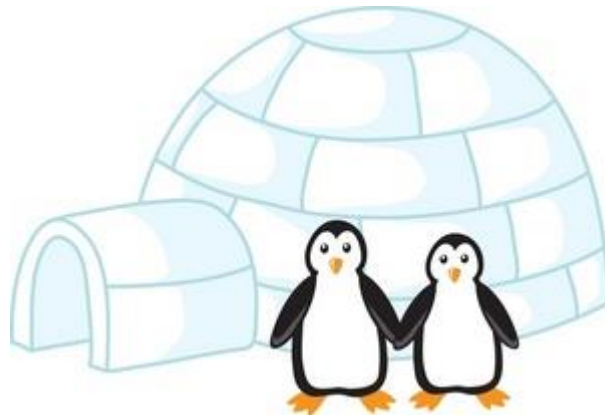


Reception Curriculum Overview and Class Routines

'The Big Freeze'



**Spring Term 1
January 2020**

Things we may talk about this half term

'Lost and found' by Oliver Jeffers

'The Snowman' by Raymond Briggs

'Fly Freddy fly' by Melanie Joyce

Ice and snow, freezing and melting

Polar regions

Chinese New Year/China

Topics

1 more and 1 less, Addition and Subtraction

2D and 3D Shapes, Capacity

Ordinal number

Money

Retelling stories

Exploring sounds of different instruments

Colour mixing

Class Expectations

We will also expect the children to:

- Be kind with their hands, feet and voices
- Use their manners at all times
- Stop, look and listen when someone is talking

We will encourage the children to:

- Take changes of routine in their stride
- Wait for things he/she wants
- Resolve minor disagreements through listening and coming up with a solution



Expressive arts and design

40 – 60 mths (EAUM&M)

- Explores the different sounds of instruments.

ELG

- They safely use and explore a variety of materials, tools and techniques, experimenting with colour, design, texture, form and function.

40 – 60 mths (BI)

- Chooses particular colours to use for a purpose.

ELG

- They begin to represent their own ideas thoughts and feelings through... technology, art, dance, music



Personal, Social and Emotional Development

40 – 60 mths (MR)

- Explains own knowledge and understanding, and asks appropriate questions of others.

40 - 60 mths (MFB)

- To begin to be able to negotiate and solve problems without aggression, e.g. when someone has taken their toy.

40 – 60 mths (SC&SA)

- To describe self in positive terms and talk about abilities.



Communication and Language

ELG (Speaking)

They use past, present and future forms accurately when talking about events that have happened or are to happen in the future.

ELG (Understanding)

They answer 'how' and 'why' questions about their experiences and in response to stories or events.



Physical Development

40 – 60 mths (M&H)

To begin to form recognisable letters

ELG

- Children show good control and co-ordination in large and small movements.

40 – 60 mths (H&SC)

- To show understanding of how to transport and store equipment safely
- To practice some appropriate safety measures without direct supervision

ELG

- Children to talk about ways to keep healthy and safe



Mathematics

40 – 60 mths (Numbers)

- Records, using marks that they can interpret and explain.
- Begins to identify own mathematical problems based on own interests and fascinations.

ELG

- Using quantities and objects, they add and subtract two single-digit numbers and count on or back to find the answer.

40 – 60 mths (SSM)

- Orders two items by weight or capacity.
- Beginning to use mathematical names for 'solid' 3D shapes and 'flat' 2D shapes, and mathematical terms to describe shapes.

ELG

They explore characteristics of everyday objects and shapes and use mathematical language to describe them.



Understanding the world

ELG (P&C)

- To know about similarities and differences between themselves and others and among families, communities and traditions (Chinese New Year)

ELG (Tech)

- They select and use technology for particular purposes.

ELG (TW)

- They talk about the features of their own immediate environment and how environments might vary from one another.



Literacy

40 -60 mths (Reading)

- Knows that information can be retrieved from books and computers.
- Uses vocabulary and forms of speech that are increasingly influenced by their experiences of books.

ELG

- They use phonic knowledge to decode regular words and read them aloud accurately.

40 – 60 mths (Writing)

- To attempt to write short sentences in meaningful contexts

ELG

- Children use their phonic knowledge to write words in ways which match their spoken sounds.

Reading/Key words

We will continue reading and changing your child's reading book **twice a week**. Once a week we will also be reading key words and will endeavour to update reading records.

Please support your child's learning of key words daily and ensure you **sign/comment in the reading record to show you have read with your child**. Please continue to 'dot' a key word if you feel your child can read it.

We will 'dot' if your child can blend to read the word and highlight it if read by sight.

Reading for pleasure

Please can we stress the importance of reading daily with your child - a minimum of 5 minutes reading every day is all that we ask. Don't feel under pressure to read the whole book every day, reading should be enjoyable!

You could:

- Talk about the pictures, what can we see? Why do you think that is?
- Discuss the character feelings and emotions
- Make predictions
- Read other books/magazines/share stories on the internet
- Share the reading, alternating pages, encourage your child to follow the text your read, listening to the fluency and accuracy as you 'read the punctuation'

Homework

Homework will continue this half term, being sent out on a Friday to be returned the following Friday. As part of the homework, we will be sending home spellings for your child to learn. The words will also be sent home each Friday on a 'look, say, cover, write, check' sheet. Children will be encouraged to practise every day and this will form part of the weekly homework.

All spellings will be tested on a Friday for all teams

PE

This half term we will be focusing on gymnastics and using apparatus. Please ensure all jewellery is removed prior to PE lessons.

Hockney learning group - Wednesday

Warhol learning group - Tuesday

Chagall learning group - Friday

PE bags will remain in school until the half term holiday. If you have not already done so, please can we ask that **ALL** PE kit and school uniform is **named**.

Celebration Mondays

The opportunity for you to join us in your child's classroom and share in their learning will continue this term.

We will be starting Celebration Monday on Monday 27th January with our 'Bedtime and Books' afternoon. Doors will open at 2.45 pm and we would like to invite you to join us to share a story, biscuit and hot chocolate with your child. We hope that you will be able to join us. Children are invited to come to school dressed in their pyjamas ready for our celebration.

Celebration News will also resume next week, please continue to support your child in sharing experiences and times with family.

Thank you very much for your continued support and patience during our end of day routines.

The Reception Team