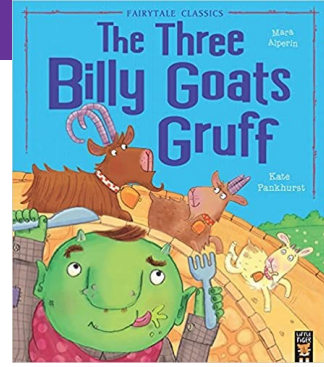


Year 1  
Autumn 2  
It's Getting Chilly



# English



## Reading

We will be reading 'The Polar Express' and 'The Three Billy Goats', We will discuss the different parts of a story including: the beginning, the middle and the end, and learn about how these can be changed.

## Writing

This half term, we will be using our understanding of the different parts of a story to create an alternative ending to 'The Three Billy Goats'. For our non-fiction piece, we will be writing a persuasive letter to Santa. We will continue to use our Kinetic Letters scheme to support our handwriting: focusing on forming the letters correctly and making sure that they are sitting on the line.

## Tier 2 vocabulary

Tier 2 vocabulary are words that are used in many situations and contexts. This term, your child will learn the meaning of the following words in some of these contexts:

fish food horse letter life rock study always answer began  
begin between carry cover ease found group half idea

**Practice  
Makes  
Perfect**

## Spellings

Practise your spellings at least 3 times per week on [Spelling Shed](#).

w/b 04.11.24

look  
looked  
asked  
could  
saw  
all

w/b 11.11.24

down  
now  
Mr  
Mrs  
what  
their

w/b 18.11.24

called  
more  
horse  
gone  
live  
would

w/b 25.11.24

school  
soon  
food  
room  
play  
way

w/b 02.12.24

say  
may  
away  
been  
need  
keep

w/b 09.12.24

feet  
snow  
grow  
window  
know

w/b 16.12.24

No spellings this  
week




# STEM

## Maths

This term, we will be learning different strategies and methods to help solve addition and subtraction problems. We will also be learning about different 2D and 3D shapes and their properties.

## Science

We will be learning about the different types of animals such as: carnivores, herbivores and omnivores. We will be learning about what animals need so they are cared for properly. We will also be learning about the season of Autumn and how the seasons change throughout the year.

Herbivore	Carnivore	Omnivore
Animals that eat plants.	Animals that eat meat.	Animals that eat both plants and meat.
		

## Computing

This half term, we will be learning about grouping data. We will label, match, group and compare different objects.

# Personal Development

## Physical Education

This term, your child will be learning how to follow a motif in our indoor dance lessons. They will be developing their skills in team games in our outdoor PE lessons.

Children should come to school dressed in their PE kit.

Dali class— Monday and Wednesday.

Picasso class— Monday and Wednesday.

Mondrian class— Tuesday and Friday

PE kit includes a purple t-shirt, black shorts/jogging bottoms, trainers and a purple fleece.

Earrings should be removed on PE days.

## Personal, Social and Health Education

The children will be learning about relationships between friends and families. They will learn about our school value of respect and will have discussions about how we can respect ourselves and others.



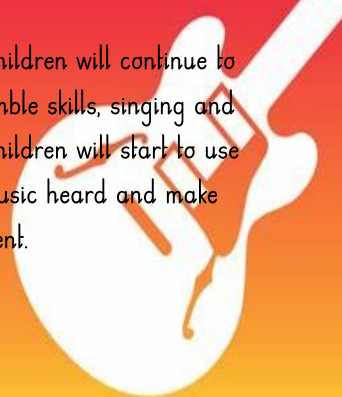
# The Arts

## DT

This term, we will be learning about food that is healthy and unhealthy, if we eat too much of it. We will then be creating our own fruit kebabs in school and tasting them.

## Music

In Music this half term, children will continue to develop their unison ensemble skills, singing and playing simple phrases. Children will start to use terminology to describe music heard and make suggestions for improvement.



# Humanities

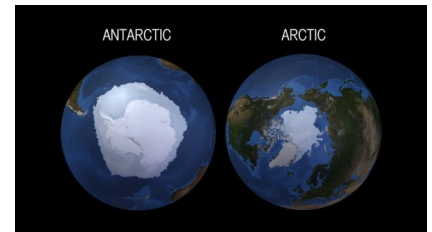
## Geography

In Geography, we will be looking at hot and cold places in the world. We will learn to identify the equator, the Arctic Ocean and the Southern Ocean.

## Religious Education

What do Christians believe God is like?

We'll use this question to help us to explore a range of religions and faiths, with the focus always being on how the thoughts and beliefs of others relate to our own belief system.



# Homework

**Reading** — at least 5 times per week. Write this in your Reading record.

**Spelling Shed** — at least 3 times per week.

**Numbots** — at least 3 times per week.

## Optional tasks:

Create a paper mâché globe and label The Arctic and Antarctica.

Research different animal types and make a list of: herbivores, carnivores and omnivores.

# Enrichment

## Trips and Visitors

Please find a list of anticipated trips and visits to enrich your child's learning. These are not all finalised and will be dependent on availability nearer the time. We are acutely aware of the increasing financial pressures on families; therefore, we want to provide you with an overview of potential costs for the year. When trips are organised, you will be provided with a clear financial breakdown of the subsequent costs.

We have several trips and visitors scheduled for the year, as follows:

Autumn 2 — Visit to Putnoe Library.

Spring 1 — Visit the Higgins Museum linked to history of toys.

Spring 2 — Walk around the local area linked to Geography.

Summer 1 — Visit Rockingham Castle (Approx, cost £25).

Summer 2 — African day in school to experience African food and culture.