

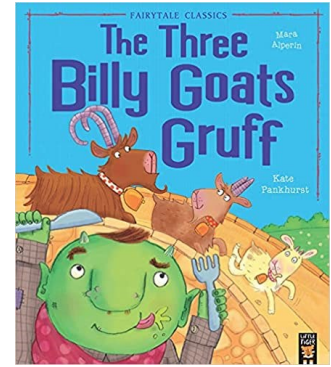
Year 1
Autumn 2
It's Getting Chilly



English

Reading

We will focus on 'The Polar Express' and 'The Three Billy Goats', We will discuss the different parts of a story including: the beginning, the middle and the end, and learn about how these can be changed.



Writing

This half term, we will be using our understanding of the different parts of a story to create an alternative ending to 'The Three Billy Goats'. For our non-fiction piece, we will be writing a persuasive letter to Santa. We will continue to use our Kinetic Letters scheme to support our handwriting: focusing on forming the letters correctly on the line.

Tier 2 vocabulary

Tier 2 vocabulary are words that are used in many situations and contexts. This term, your child will learn the meaning of the following words in some of these contexts:

fish food horse letter life rock study always answer began
begin between carry cover ease found group half idea

**Practice
Makes
Perfect**

Spellings

Practice your spellings at least 3 times per week on [Spelling Shed](#).

w/b 30.10.23	w/b 6.11.23	w/b 13.11.23	w/b 20.11.23	w/b 27.11.23	w/b 04.12.23	w/b 11.12.23
the	he	they	his	can	what	like
and	I	on	but	are	there	some
a	of	she	that	up	out	so
to	it	is	with	had	this	not
said	was	for	all	my	have	then
in	you	at	we	her	be	were

STEM

Maths




This term, we will be learning different strategies and methods to help solve addition and subtraction problems. We will also be learning about different 2D and 3D shapes and their properties.

Science

We will be learning about the different types of animals such as: carnivores, herbivores and omnivores. We will be learning about what animals need so they are cared for properly. We will also be learning about the season of Autumn and how the seasons change throughout the year.

Computing

This half term, we will be learning about grouping data. We will label, match, group and compare different objects.

Herbivore	Carnivore	Omnivore
Animals that eat plants .	Animals that eat meat .	Animals that eat both plants and meat .
		

Personal Development

Physical Education

This term, your child will be learning how to follow a motif in our indoor dance lessons. They will be developing their skills in team games in our outdoor PE lessons.

Children should come to school dressed in their PE kit.

Dali class— Monday and Wednesday.

Picasso class— Monday and Wednesday.

Mondrian class— Tuesday and Wednesday

PE kit includes a purple t-shirt, black shorts/jogging bottoms, trainers/plimsolls and a purple fleece. Earrings should be removed on PE days.

Personal, Social and Health Education

The children will be looking at relationships between friends and families. They will learn about our school value of respect and will have discussions about how we can respect ourselves and others.



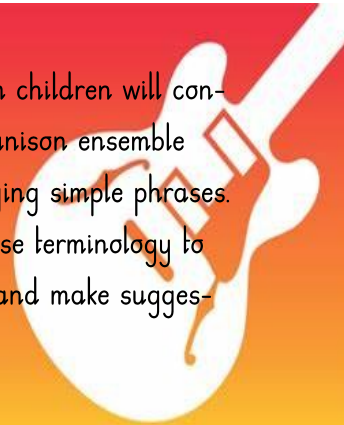
The Arts

DT

This term, we will be looking at food that is healthy and unhealthy. We will then be creating our own fruit smoothies in school and tasting them.

Music

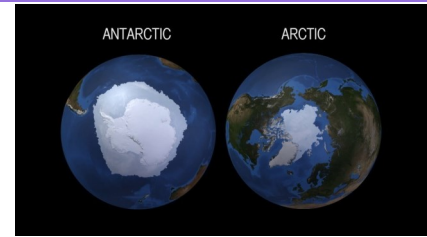
In Music this half term children will continue to develop their unison ensemble skills, singing and playing simple phrases. Children will start to use terminology to describe music heard and make suggestions for improvement.



Humanities

Geography

In Geography, we will be looking at hot and cold places in the world. We will learn to identify the equator, the Arctic Ocean and the Southern Ocean



Religious Education

What do Christians believe God is like?

We'll use this question to help us to explore a range of religions and faiths, with the focus always being on how the thoughts and beliefs of others relate to our own belief system.

Homework

Reading — at least 5 times per week. Write this in your Reading record.

Spelling Shed — at least 3 times per week.

Numbots — at least 3 times per week.

Optional tasks:

Create a paper mâché globe and label The Arctic and Antarctica.

Research different animal types and make a list of: herbivores, carnivores and omnivores.

Enrichment

Trips and Visitors

Please find a list of anticipated trips and visits to enrich your child's learning. These are not all finalised and will be dependent on availability nearer the time. We are acutely aware of the increasing financial pressures on families; therefore, we want to provide you with an overview of potential costs for the year. When trips are organised, you will be provided with a clear financial breakdown of the subsequent costs.

We have several trips and visitors scheduled for the year, as follows:

Autumn 2 — Visit to Putnoe Library and Pantomime to visit Putnoe Primary.

Spring 1 — Visit the Higgins Museum linked to history of toys.

Spring 2 — Walk around the local area linked to Geography.

Summer 1 — Visit Rockingham Castle (Approx, cost £25).

Summer 2 — African day in school to experience African food and culture.