

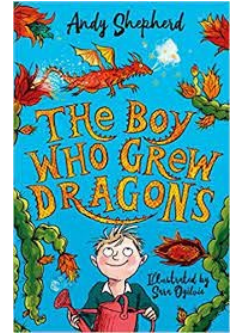
Year 4
Autumn 1
Amazon
Adventure!



English

Reading

Reading will continue to be a vital aspect of the children's learning. They will be able to order a book from the library to further develop their pleasure in reading, alongside improving their comprehension skills. We will be reading 'The Boy Who Grew Dragons'.



Writing

Children will be taught a variety of fiction and non-fiction genres. They will start by looking at persuasive holiday advertisements. Throughout the year, emphasis will be placed on the correct use of spelling, punctuation and grammar (SPaG) in their writing as well as the ability to recite poems alongside their peers. Children will focus on their presentation skills using cursive handwriting and develop their organisational skills.

Tier 2 vocabulary

Tier 2 vocabulary are words that are used in many situations and contexts. This term, your child will learn the meaning of the following words in some of these contexts:

abrupt accelerate anticipate appeal ascend attempt attentive baggage blossom coax
competition complete concern dense destructive develop disaster distress fragile furious
habitat hostile impact possess threat tragic

Spellings

Practice your spellings at least 3 times per week on [Spelling Shed](#).

Practice
Makes
Perfect

W/b 11.09.23

**Words that are
homophones**

accept
except
knot
not
peace
piece
plane
plain
weather
whether

w/b 18.09.23

**Words with the
prefix 'in-'**

inactive
incorrect
invisible
insecure
inflexible
indefinite
inelegant
incurable
inability
inadequate

w/b 25.09.23

**Words with the
prefixes 'il-', 'im-'
and 'ir-'**

illegal
illegible
immature
immortal
impossible
impatient
imperfect
irregular
irrelevant
irresponsible

w/b 02.10.23

**Words with the
prefix 'sub-'**

submarine
subdivide
subject
substandard
subway
subheading
submerge
subtle
subtropical
submit

w/b 09.10.23

**Words with the
prefix 'inter-'**

interact
intercity
international
interfere
interview
intercept
intercom
internet
interchange
interface

w/b 16.10.23

Challenge Words

strength
opposite
women
believe
interest
calendar
grammar
straight
appear
increase

STEM

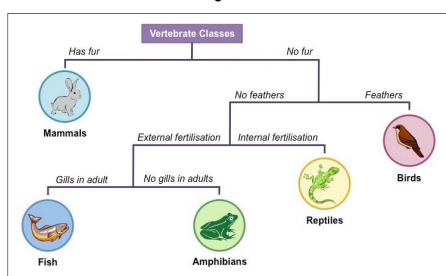
Maths

This term, we will be learning about the following: Addition and subtraction, and Place value. As always, times tables form the basis of so many other areas of Maths. Children should practise their times tables at least 3 times per week on [Times Tables Rock Stars](#).

**Practice
Makes
Perfect**

Science

Children will be learning about 'Living Things and their Habitats.' They will learn to use and make keys to classify plants and animals, as well as recognise how environments change over time.



Computing

Children will apply their knowledge and understanding of networks, to appreciate the internet as a network of networks which need to be kept secure. They will learn that the World Wide Web is part of the internet, and be given opportunities to explore the World Wide Web for themselves to learn about who owns content and what they can access, add, and create. Finally they will evaluate online content to decide how honest, accurate, or reliable it is, and understand the consequences of false information. .

Personal Development

Physical Education

In PE, children will be exploring skills and health related fitness including; strength, cardiovascular fitness, agility, coordination, reaction time and power. Outdoor PE will consist of games and key concepts. They will look at developing their passing, dribbling and teamwork.

Personal. Social and Health Education

This term, our PSHE learning will focus on the development of safe relationships with family and friends. We will also be talking about how to respect ourselves and others.



The Arts

Art

In Art this half term, children will be developing the skills needed for a mixed media piece using the techniques of collage and drawing. Pupils will use pattern making techniques with various leaf shapes and flowers as stimuli. Artists that we will use for inspiration include Henri Rousseau.

Music

In Music this half term, children will be trying out three percussion ensembles. Pupils will play a range of instruments maintaining their own part in a three or four layered piece. We will use the school Samba kit to try Samba and Bossa Nova pieces, developing the ability to play more complicated or syncopated rhythms over time.

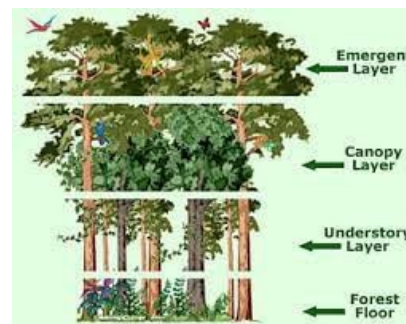
Humanities

Geography

In Geography, children will learn about the Amazon Rainforest. They will investigate different settlements within Brazil and compare lifestyles between places in Brazil and Bedford. Children also investigate the importance of trade links and design a shelter to help them survive in the rainforest. Throughout the year, they will learn to identify the shape of the continents when seen in isolation and know the names of the five oceans.

Religious Education

Throughout the Autumn term, children will learn in detail about key topics and events in Judaism. They will learn what it means to be a Jew and compare with their own lifestyles. They will explore themes such as forgiveness and repentance, linking this to both Judaism and their own lives. Children will also take a more in depth view on the festivals and important dates in the Jewish calendar. They are continuing to develop their skills to question faiths and beliefs in a tolerant manner.



Homework

Reading — at least 5 times per week. Write this in your planner.

Spelling Shed — at least 3 times per week.

Times Table Rockstars — at least 3 times per week.

MyMaths — once a week

Optional tasks:

Create a presentation about an animal who lives in the Amazon; consider how they survive in their habitat.

Create a collage of an Amazon scene.

Create a poem about the sounds of the Amazon.

Enrichment

Trips and Visitors

Please find a list of anticipated trips and visits to enrich your child's learning. We are acutely aware of the financial pressures on families; therefore, we want to provide you with an overview of potential costs for the year. Parent Pay can be topped up with Parent Pay credit as regularly as you wish, and then funds can be allocated to specific trips when details are shared closer to the time.

Autumn 1 — Oxford Living Rainforest (£23.50) and VR Headsets for Rainforest (£6.00)

Autumn 2 — St Albans Verulamium (£23.00) and VR headsets for Maya Civilisation (£6.00)

Spring 1 — British Museum Virtual Tour 1 hour (no cost) St Albans Museum (£16.00)

Spring 2 — VR Polar Regions (£6.00)

Summer 1 — Saxon workshop (£14.50) and Visit from Christians Against Poverty

Summer 2 — Visit from planning department (no cost)