

Year 2
Autumn 1

Water, Water
Everywhere!

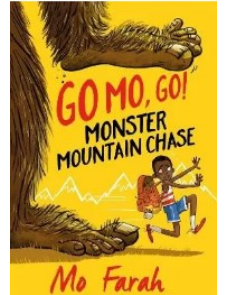


English



Reading

Our class text is the 'The Great Wave' by Katsushika Hokusai. This book introduces young readers to a beloved artist. We will also be reading 'Go Mo Go' exploring the life of Mo Farrah. The skills we will be developing are expression, story language and features of a non-fiction text.



Writing

This term, we will be learning to write a recount of the short story "The Storm Whale" by Benji Davies. We will be using a story map to support recall of the story and to write it independently. We will also be writing a fantastic setting description, filled with adjectives from the picture book 'The Snail and the Whale'.

Tier 2 vocabulary

Tier 2 vocabulary are words that are used in many situations and contexts. This term, your child will learn the meaning of the following words in some of these contexts:

dry	travel	snow	east	surface	deep
island	busy	wind	common	blue	plane
ship	half	rock	south	strong	

**Practice
Makes
Perfect**

Spellings

We will learning our common exception words (highlighted in bold), spelling patterns and recapping our phonics this half term. Practise your spellings at least 3 times per week on [Spelling Shed](#).

Week 1	Week 2	Week 3	Week 4	Week 5	Week 6
CEW's, dge and g	CEW's, soft c and kn	CEW's, gn and wr	CEW's, le, il and el	CEW's, al and homo- phones	CEW's and vowel suf- fixes
love	said	house	from	made	see
some	school	where	help	make	very
come	here	were	back	by	day
was	you	they	animals	my	have
his	there	are	children	too	about
bridge	dance	design	uncle	pedal	making
fridge	city	gnome	little	metal	shaking
angel	knife	gnaw	fossil	to	hopping
huge	knees	wright	pencil	too	swimming
magical	knock	wrong	travel	two	dropped

STEM

Maths

This half term, we will be learning about: place value, addition and subtraction, and shape. We will be focusing on securing the fundamentals of number, practising number bonds to 10, 20 and 100. We will also continue to recall our 2, 5 and 10 times tables. As part of your homework, please practise your skills on Number Bots.

Science

This half term, we will be learning about 'Living things and their Habitats'. We will focus on things that are living, dead and that have never been alive. We will investigate different animals and their habitats, and compare them to creatures that live on the seashore, linking to our 'Water' topic,

Computing

Robot Algorithms: We will be using a range of software to create an algorithm to make a simple repeated pattern. This will develop in to a piece of art work.

Personal Development

Physical Education

In our indoor PE sessions, we will be taking part in Gymnastics, using a variety of skills and applying these on the apparatus. In our outdoor PE sessions, children will be learning the fundamental movements such as walking, jumping, skipping, hopping and running.

Personal, Social and Health Education

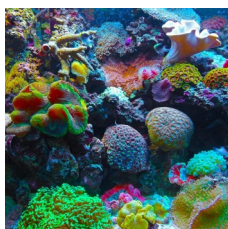
This half term, we will be exploring different relationships, how these develop and how to maintain positive, healthy friendships with others.



The Arts

Art

This half term we will be looking at sculpture, focussing on textures and shapes found in coral. Our inspiration will be; Aude Bourguin, Milla Hipsley and Vanessa Barragao.



Music

In Music, we will be singing several songs with actions. We will focus on singing with varied focus and dynamics, listening to melodies carefully to form a class choir.



**Practice
Makes
Perfect**

Humanities

Geography

We will be learning to name and locate the world's five oceans and seven continents. We will be able to identify the equator and use simple compass directions.



Religious Education

We will be learning about how different religions care about each other and the earth.
We will be creating our own 'Golden Rules' and sharing them with each other.

Homework

Reading — at least 5 times per week, write this in your child's reading record.

Spelling Shed — at least 3 times per week.

Number Bots — at least 3 times per week.

(Login details in reading record)

Optional tasks:

Create a piece of artwork that focuses on animal habitats.

Use a variety of 'recyclable materials' to create your own robot.

Explore different forms of water e.g. swimming or water play.

Enrichment

Trips and Visitors

Please find a list of anticipated trips and visits to enrich your child's learning. We are acutely aware of the financial pressures on families; therefore, we want to provide you with an overview of potential costs for the year. Parent Pay can be topped up with Parent Pay credit as regularly as you wish, and then funds can be allocated to specific trips when details are shared closer to the time.

Autumn 1 — Priory Marina — visit the marina and look at pond life/dipping **Approx Cost:** £10 per child

Autumn 2 — The Great Fire of London Museum, London **Approx Cost:** £30 per child

Spring 1 — Visit from a local Sports team/coach No cost

Spring 2 — Visit to Putnoe library, Putnoe No cost

Summer 1 — Roald Dahl Museum, Great Missenden **Approx Cost:** £25 per child

Summer 2 — Cultural food experience— No cost

